

MONTHLY MEMBERSHIP PROGRESS REPORT

LOCATION PENNSYLVANIA

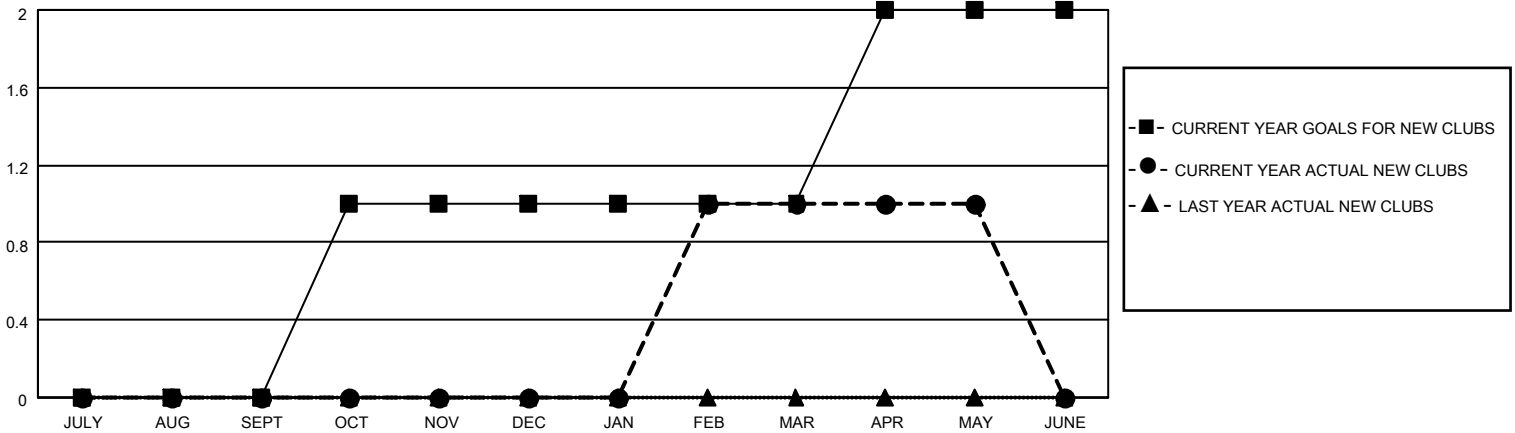
District 14 D

Results as of: 5/31/2022

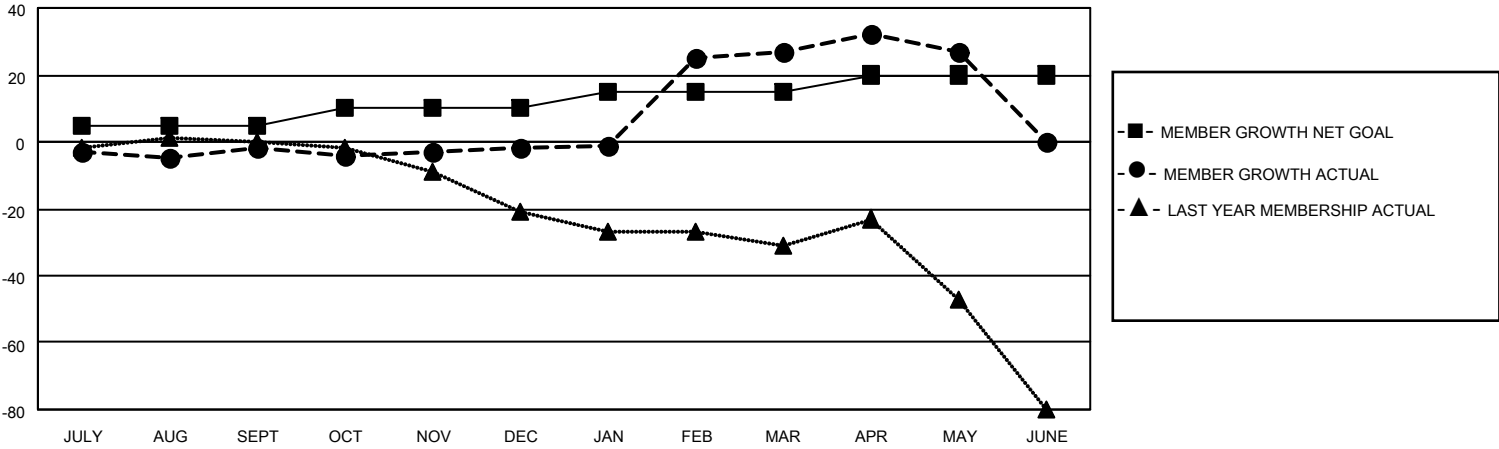
Clubs			
RESULTS FOR 2021-2022			
QUARTER	NEW CLUB GOAL	NEW CLUBS	DROPPED CLUBS
JULY/AUG/SEPT	0	0	0
OCT/NOV/DEC	1	0	0
JAN/FEB/MAR	0	1	0
APR/MAY/JUNE	1	0	0

Members			
RESULTS FOR 2021-2022			
QUARTER	MEMBER GROWTH NET GOAL	MEMBER GROWTH ACTUAL	DROPPED MEMBERS ACTUAL (including transfers)
JULY/AUG/SEPT	5	23	19
OCT/NOV/DEC	5	27	24
JAN/FEB/MAR	5	56	26
APR/MAY/JUNE	5	23	22

GOALS AND ACTUAL NEW CLUBS CUMULATIVE



GOALS AND ACTUAL MEMBERS CUMULATIVE



DROPPED CLUBS: 0	31 CLUBS OF 43 ADDED 1 OR MORE NEW MEMBERS	<p style="text-align: center;"><u>GENDER DISTRIBUTION</u></p> MALE 973 (75.66%) FEMALE 313 (24.34%) NON BINARY 0 (0.00%) PREFER NOT TO ANSWER 0 (0.00%)
<p style="text-align: center;"><u>DROPPED MEMBERS</u></p> DECEASED 25 CLUB CANCELLED 0 OTHER 66 <hr/> TOTAL 91	CLICK HERE FOR CUMULATIVE MEMBERSHIP DATA	TOTAL FAMILY UNIT MEMBERS 223 FAMILY MEMBERS PAYING HALF DUES 114